

# Family Guide

GSEP MEMBERSHIP YEAR 2026

girl scouts  
of eastern  
pennsylvania

*Building girls of courage, confidence and character who make the world a better place.*



*Welcome to Girl Scouts! This guide provides an overview of the Girl Scout program and a peek into the amazing year ahead for you and your Girl Scout!*

2 | Girl Scout Approach

3 | Girl Scout Program

4-5 | Program Levels

6-7 | Girl Scout Year

8 | Family Engagement

9 | Volunteer

10 | FAQ

11 | Shops and Uniform

12 | Council Overview

# What is Girl Scouts?

Girl Scouts has been building girls of courage, confidence, and character for over 113 years. Girl Scouts is a movement built to ensure girls have the support and an inclusive, safe space to find their passions, push their limits, and create a community.

**When girls participate in Girl Scouts, they benefit in 5 important ways:**



## Strong Sense of Self

Girls have confidence in themselves and their abilities, forming positive identities.



## Positive Values

Girls act ethically, honestly, and responsibly, and show concern for others.



## Challenge Seeking

Girls take appropriate risks, try things even if they might fail, and learn from mistakes.



## Healthy Relationships

Girls develop and maintain healthy relationships by communicating their feelings directly and resolving conflicts constructively.



## Community Problem Solving

Girls desire to contribute to the world in purposeful and meaningful ways, learn how to identify problems in the community, and create “action plans” to solve them.

**Part of the reason Girl Scouts become such amazing leaders is because our programs are designed to empower and engage girls. All of our activities, meetings and experiences are...**

### Girl-Led

Girls shape their experience.

### Cooperative Learning

Together, girls build meaning and understanding.

### Learning by Doing

Girls try it all and figure things out from successes and failures.



# What do Girl Scouts do?

Over the course of a year in Girl Scouts, we strive for every girl to experience our Foundational Girl Scout Activities:



**Badges,  
Patches, &  
Awards**



**Outdoor &  
Camping**



**Product  
Program**



**Community  
Service &  
Take Action**



**Field Trips  
& Girl Scout  
Events**



**Traditions**

## How will you choose to Girl Scout?

### **Join a Troop**

A Girl Scout troop is a community of girls often creating life-long friendships. Troops usually meet twice a month for 45-90 minutes and go on a couple of trips a year. It's a great activity alongside sports, dance and other more intensive experiences.

### **Try a SPARK or Local Event**

Sign up individually or as a Troop for the dates and programs that work with your schedule and interests. Girl Scout events happen in all the counties and areas we serve with activities ranging from outdoor experiences to pool parties to unique opportunities like a slumber party on at the Crayola Factory.

### **Go to Summer Camp**

GSEP's seven summer camps offer a variety of activities with weekly themes for all interests and include day and overnight options for girls entering K-12th grades.

### **Earn Awards and Gain Leadership Opportunities**

As Girl Scouts grow, they have an increasing number of opportunities to earn awards and practice leadership. Girls can earn Service Bars, Leadership Awards, scholarships and other recognitions. These are notable accomplishments that girls can leverage in high school and college applications, job interviews, and more.

# Growing Up a Girl Scout

**Traditions:** Girl Scout traditions like ceremonies, songs and games connect past, present and future, linking generations of Girl Scouts with a shared purpose.

**Patches:** In addition to badges, girls receive patches for participating in special events, learning skills or achieving specific accomplishments.



**Check out all the possible badges Girl Scouts can earn!**



**Petals:** Daisies earn their petals by learning and practicing the promise and law.

**Badges:** Girls earn badges as they learn new skills and tackle challenges. Badges allow girls to show off all that they have accomplished through their years of Girl Scouting.

## **Bronze Award:**

Juniors can earn the Bronze award by working with their troop to plan and carry out a project that makes a lasting impact on her community.



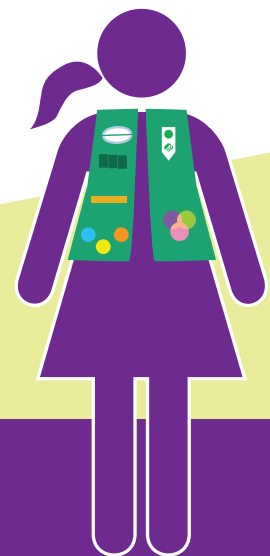
**DAISIES**  
K – 1st

Fun and  
Friendship



**BROWNIES**  
2nd – 3rd

Try and  
Explore



**JUNIORS**  
4th – 5th

Discover  
and Lead

**Bronze  
Award**

**Leadership Awards:** In addition to the Highest Awards, starting in 4th grade, girls have the opportunity to earn awards for personal leadership, peer leadership, teaching leadership and community advocacy.

**Service Bars:** Starting as Cadettes, girls can earn recognitions by volunteering for a community organization or for Girl Scouts.



**Silver Award:**  
Cadettes pair up or go solo to lead a project that solves a problem they care about to earn the Silver Award.

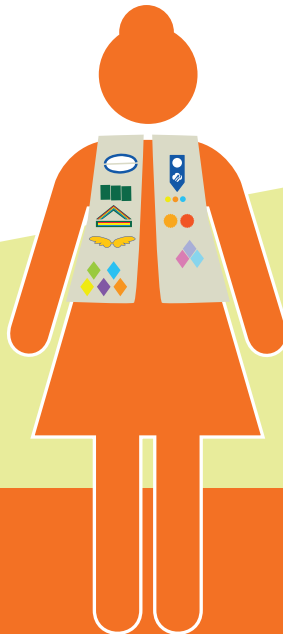
**Gold Award:** The highest honor in Girl Scouts, Seniors and Ambassadors lead a big, lasting project that tackles an important issue and creates sustainable change.



**CADETTES**  
6th – 8th

Go. See. Do.

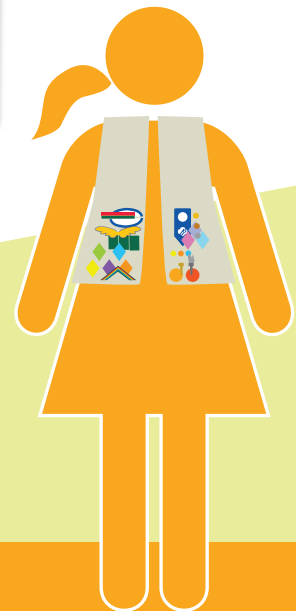
**Silver Award**



**SENIORS**  
9th – 10th

Advocacy  
and Action

**Gold Award**



**AMBASSADORS**  
11th – 12th

Future  
and Fun

**Trifecta Award**

# Your Girl Scout Year!

Every girl's year in Girl Scouts can look different and can change over the course of her experience in the program. Check out an example of a year of Brownies below!

## September

- Join and meet your troop
- Attend family meeting and sign up to volunteer
- Girls have their first Girl Scout troop meeting and start to create a community
- Get set up with your uniform

## November

- Girls earn their second badge  
STEM: Create and Innovate
- Girls attend a local GSEP program focused on crafting and earn a Crafting Patch!



## October

- Girls help decide the scope of activities and badges for the year
- Girls earn their first badge  
Life Skills: Outdoor Art Creator
- Girls celebrate Juliette Gordon Low's birthday (the founder of Girl Scouts)
- girl participate in Fall Product Program to raise money for the troop activities

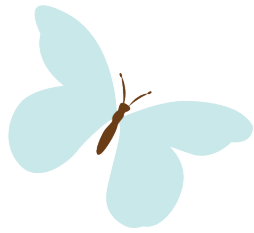


## December

- Girls earn the Resilient, Ready, Strong Patch
- Girls participate in a community service program – sending holiday notes to a local senior center
- Families and girls learn about the cookie program!

**You can see sample yearlong plans for other grade levels here:**





## January

- Girls earn their third badge:  
Entrepreneurship: My Cookie Customers



## March

- Girls celebrate the end of the Cookie Program and plan how to use their proceeds.
- Girls earn their fifth badge  
Life Skills: Girl Scout Way
- Girls use their cookie proceeds to visit a local museum

## May

- Girls plan and go on an outdoor adventure at a local state park.
- Girls reflect on their year and set goals for their next year of Girl Scouting.



## February

- Girls earn their fourth badge  
STEM: Home Scientist
- Girls do their first Cookie Booth!
- Girl participate in a World Thinking Day activity with their Service Unit – learning about the global influence of Girl Leadership

## April

- Girls earn their sixth badge  
Outdoors: Eco Friend

## June

- Girls have a Bridging Ceremony and invite friends and family to celebrate their year of accomplishments in Girl Scouts
- Girls attend Girl Scout Summer Camp!





# Family Engagement

Family and caregiver support is necessary to ensure that girls are able to maximize their Girl Scout experience.

## Facilitate Your Girl's Participation

- Make sure she arrives on time for meetings.
- Help fulfill Girl Scout responsibilities including dues, permission slips and uniform.
- Let her know Girl Scouting is special and important.
- Attend family meetings and troop ceremonies.

## Communicate with Your Troop Leadership

- Read emails, texts and Rallyhood messages.
- Respond with your girl's availability and permission to attend events.
- Discuss issues that may arise privately with your troop leaders.

## Supplement Learning at Home

- Complete missed activities so she can earn a badge.
- Have her teach you what she learned.
- Consider helping your girl earn additional badges and awards with you.

## Support Product Program

- Talk with your girl about goal setting and money management.
- Encourage your girl to sell to family, friends and neighborhood.
- Understand and follow all product program guidelines.
- Celebrate with her when she accomplishes her goal.





# Joining a Troop Committee

Troops need the support of adult volunteers like you to provide a quality Girl Scouts Leadership Experience. Parents/caregivers, adult family members, Girl Scout Alums, and community members who want to help are all welcome. When you're involved in the Troop Committee, you get to share in your Girl Scout's adventures!

## Troop Co-Leaders (minimum 2)

- Schedule & plan troop meetings
- Help girls have fun with purpose
- Communicate with parents/caregivers
- Oversee troop treasury transactions
- Manage troop safety

## Product Sales Manager (1-2)

- Support successful Fall Product & Cookie Programs for the troop
- Help Girl Scouts set & achieve goals
- Communicate with parents/caregivers
- Manage product inventory
- Schedule cookie booths



## Troop Treasurer (1)

- Become primary signer on troop bank account
- Manage troop bank account
- Complete & submit annual financial report to GSEP

## Troop Helpers

- Chaperone outings & field trips
- Assist during troop meetings
- Supervise at cookie booths

*All volunteers must become a Girl Scout adult member and submit up to date criminal background checks and clearances in order to participate and support the Girl Scout program. Register here:*



# Frequently Asked Questions

## What are the costs associated with Girl Scouts?

Girl Scout Membership dues cost \$45 for girls and \$30 for adults, supporting our national organization, GSUSA, in order to provide insurance and other resources for local councils. Additional costs may include uniforms (approximately \$30), troop dues (differs by troop), trips, and troop meeting materials.

GSEP offers financial aid opportunities for membership dues and uniforms for families facing financial hardships.

Girl Scouts product programs (Fall Product Program and the Cookie Program) allow for troops to become financially self-sustaining over time and can limit the costs incurred by families.

## What are the benefits of membership?

As a Girl Scout, girls become part of a worldwide sisterhood with a long tradition, participating in a program that has produced girls of courage, confidence and character for over 113 years.

As a GSEP member, girls not only have access to researched-based activities and curriculum, they can also attend our accessible and unique programming, sign up for affordable and girl centered camps, and have access to Girl Scout only scholarships, awards and recognitions.

## At what age can girls start participating in Girl Scouts?

Girl Scouts has programming from kindergarten through 12th grade and girls can join at any time! Activities, badges and awards are differentiated by age level and designed with girl interest in mind.

## What if there isn't a troop in my area?

We are always forming new troops and can work with local families to create an accessible troop in the area. There is also the opportunity to engage in Girl Scouts without a troop. Girls who participate without a troop are called Individually Registered Girl Scouts or Juliettes and can engage in council programming, leadership opportunities and camp!

## How do you ensure safety?

At Girl Scouts, safety is a top priority. All activities are supervised, and we provide our volunteers with top-notch training, program resources and require all volunteers to have state mandated clearances.

## Who can I reach out to for more information about Girl Scouts?

You can check out our website at [www.gsep.org](http://www.gsep.org) or reach out to Member Services with any questions at [memberservices@gsep.org](mailto:memberservices@gsep.org) or 215-564-2030

## How can I join?

You can join at [www.gsep.org/join](http://www.gsep.org/join)



# Girl Scout Shops!

GSEP shops are open for all Girl Scouts and their families, not just Troop Leaders. Get started with your new uniform, handbooks, and cool Girl Scout swag. When you shop at a GSEP shop, you are directly supporting your local council. GSEP troops are tax exempt at our shops on all troop purchases.

## Shop Locations

### Shelly Ridge

(215) 840-7953

330 Manor Rd. Miquon, PA 19444

### Valley Forge

(445) 866-6768

100 Juliette Low Way

Phoenixville, PA 19460

### Jane Seltzer

(267) 965-6179

2020 Rhawn St. Philadelphia, PA 19152

### Luella - Mobile Shop

Various Locations

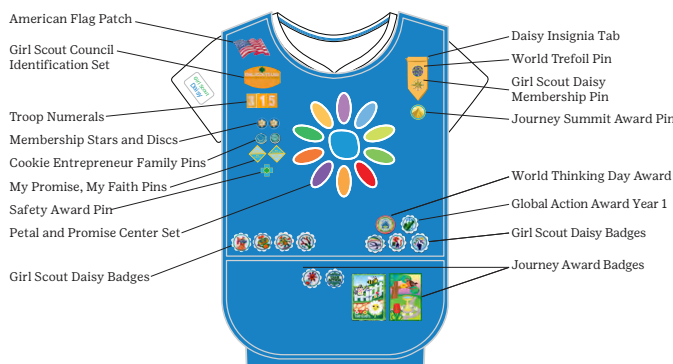
## Uniforms

You can order uniforms, badges and insignia from a council store online by filling out our jot form here. You can choose to have your items shipped (Free shipping above \$100) or ready for store pick up.



*Scan for the Jotform!*

### Daisy Uniform



### Brownie Uniform



## Shop Online

Visit [www.girlscoutshop.com](http://www.girlscoutshop.com), the national organization's online shop. Be advised this online shop charges sales tax and shipping on all orders. GSEP's council shops cannot provide customer service on GSUSA online orders.

*For more information  
for the shop:*



## Financial Aid

Families who would like to request a one time \$25 shop certificate for uniform components can fill out the form at [www.gsep.org/shopcertificate](http://www.gsep.org/shopcertificate). After their first cookie sale, Girl Scouts can use Cookie Dough earned through Cookie Season toward new uniform purchases when visiting a GSEP Shop. Just mention your Cookie Dough to the associate for assistance.



# About Our Council Footprint



Girl Scouts of Eastern Pennsylvania (GSEP) is part of the national Girl Scouts organization (GSUSA) and movement. Our council serves girls and volunteers across our nine-county footprint in Eastern Pennsylvania.

Girl Scout volunteers in our council are organized into local Service Units. Each Service Unit is led by dedicated and experienced volunteers who provide support, guidance, resources and opportunities to Girl Scouts and volunteers in their area. Our council is also supported by a team of committed staff members who ensure our volunteers have all the resources they need to be successful.

Welcome to our GSEP community!

## 7 Sites

### 1. Camp Shelly Ridge

Miquon, PA 19444  
*Headquarters and  
Retail Shop*

### 2. Jane Seltzer

Philadelphia, PA 19152  
*Retail Shop*

### 3. Camp Laughing Waters

Gilbertsville, PA 19525

### 4. Camp Mountain House

Allentown, PA 18103

### 5. Camp Mosey Wood

White Haven, PA 18661

### 6. Camp Valley Forge

Valley Forge, PA 19481  
*Retail Shop*

### 7. Camp Wood Haven

Pine Grove, PA 17963



## 9 Counties

Berks	Lehigh
Bucks	Montgomery
Carbon	Northampton
Chester	Philadelphia
Delaware	

## 4 Overnight Camps

Camp Laughing Waters  
Camp Mosey Wood  
Camp Shelly Ridge  
Camp Wood Haven

## 3 Day Camps

Camp Mountain House  
Camp Shelly Ridge  
Camp Valley Forge

## THE GIRL SCOUT PROMISE

On my honor, I will try:  
To serve God\* and my country,  
To help people at all times,  
And to live by the Girl Scout Law.

*\*Members may substitute for the word God in  
accordance with their own spiritual beliefs.*

## THE GIRL SCOUT LAW

I will do my best to be  
honest and fair,  
friendly and helpful,  
considerate and caring,  
courageous and strong,  
and responsible for what  
I say and do,

and to respect myself  
and others,  
respect authority,  
use resources wisely,  
make the world a  
better place,  
and be a sister to every  
Girl Scout.